



NEWINGTON LONDON

3 Bedrooms

Apartment

Located in London

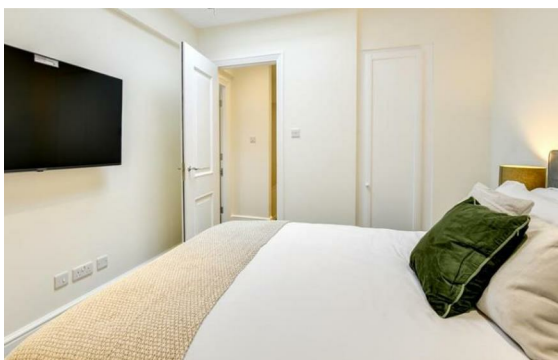
£1,500 Per Month



info@newingtonstates.com

<http://www.newingtonstates.com>

020 7724 2233



A contemporary apartment set on the sixth floor (with lift), offering a spacious reception room, large private terrace with impressive city views, separate kitchen, three double bedrooms (one en-suite), and a family bathroom. The building also provides a 24-hour porter service.

Ideally located just off Gloucester Place, the property is moments from Baker Street, Marylebone Village, and Regent's Park, with excellent transport links nearby, including Baker Street Underground Station and Marylebone Station.

EPC rating: D

Energy Efficiency Rating: D

Agents Note: Whilst every care has been taken to prepare these particulars, they are for guidance purposes only. All measurements are approximate and are for general guidance purposes only and whilst every care has been taken to ensure their accuracy, they should not be relied upon and potential buyers/tenants are advised to recheck the measurements.

NEWINGTON LONDON

60 Upper Montagu Street

London

W1H 1SN

020 7724 2233

info@newingtonstates.com

<http://www.newingtonstates.com>